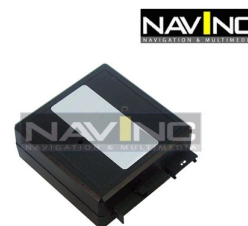


General

The NavInc steering wheel interface enables to convert the resistive signals to usable analogue signals. Because of the interface the original steering wheel functions of the vehicle keep working in combination with an aftermarket radio- or navigation system



The interface is suitable for a lot of car models and 20 aftermarket radio- and navigation system manufacturers.

Besides also Plug and Play cable kits are available for an easy installation without damaging the original wiring of the vehicle.

See tab "Downloads" for the complete compatibility list or see this link:

[LINK CATALOG](#)

An overview of the different functionalities:

Steering Wheel Controls



The interface makes sure the original steering wheel controls functionality maintains the same in combination with the right control cable (optional).

The following functionalities are possible:

- Skip songs
- Volume control
- Play/Pause
- Source option (switch between FM-AM-CD-iPod-etc.)
- Mute
- Up / Down menu buttons
- Telephone answer/deny

For specific functionalities check tab "Compatibility".

P&P cables



At the bottom of the page you can select the following:

- Universal cable kit
- Plug & play cable kits

- No cable kit

Phone function

For those cars having Telephone steering Wheel buttons control to answer / refuse any call coming from the aftermarket radio hands free Telephone.

The following is provided in the set:

- SW interface
- Installation- and user manual
- Warranty
- Invoice

Optional:

- (Plug and play) cable adapter (selectable at the bottom of this page)
- Radio adapter (selectable at the bottom of this page)
- Parking sensor buzzer

Additional information:

- Check at the "compatibility" tab on top of this page if your car model, radio or navigation system is suitable for this product.
- At this tab you will also find information about the support of steering wheel controls.
- Choose the right optional Radio-adapter (selectable at the bottom of this page)
- Choose the right cable adapter (selectable at the bottom of this page)
- The interface is CE, FCC and TUV certified

Product specifications:

Voltage: 10 - 16V VDC

Standby consumption: 0,001 A

Decrease in Operating: 0,048 A

Temperature range: - 30°C up to + 80°C

Weight: 42gr

Dimensions: Width 65mm x Height 65mm x Depth 25mm

Compatibility

The interface is compatible with the following models from Toyota:

Y = Yes

N = No

Toyota		1	2	3	4
Auris	2007-2009	Yes	No	Yes	T013
Avensis	2004->	Yes	No	Yes	T013
Corolla	2004->	Yes	No	Yes	T013
Hilux	2010->	Yes	No	Yes	T013

Rav 4	2004->	Yes	No	Yes	TO13
Verso	2009->	Yes	No	Yes	TO13
Yaris	2004->	Yes	No	Yes	TO13

- 1: Steering Wheel compatible
- 2: Phone buttons compatible
- 3: Plug and play adapter available
- 4: Article plug and play adapter

For the complete compatible list see tab "Downloads" or see this link:

[LINK CATALOG](#)

Cable kits

The following cable adapters are available for Toyota:

Plug and play cable adapter = CXC-COM-TO13

No cable kit = No cable adapter

Universal cable adapter = CXC-COM-UN13

Universal cable adapter with IR connector = CXC-COM-UN21

The cable adapters can be selected at the bottom of this page.

Radio adapters

To maintain the original steering wheel control you must select the optional radio adapter at the bottom of this page.

Below you will find a short overview of the various radio adapters and compatible radio models.

CX-ST-JV12

CLARION, JVC, BELSON NAVIX-450, BS3112; **MACROM** M-DVD5542R, M-DVD5561R, M-DVD5562R ; **DIGITAL DYNAMIC** DYMAGE-N620; **SKYWAY** GM-7540 NAVI; **AUTOSONIK** DAYTONA 8000, INDIANAPOLIS 2600, MONTECARLO 2010, INDIANAPOLIS 6100 Navi ; **PHONOCAR** VM033, VM037, VM029.

CX-ST-PI12

PIONEER; SONY*; PHONOCAR VM040*(**flashes 5**), VM041* (**flashes 5**), VM024; **NAVIS** NS-1770 (**flashes 5**); **UNICARS** EAGLE3.5, EAGLE2D, EAGLE2DBT, EAGLE2DGPS, EAGLE2DNAV, EAGLE2D62NB (**flashes 4**); **EVUS** DD710X (**flashes 4**); **INNOVATE** INVM3231 (**flashes 4**); **CASKA** CA1621G (**flashes 4**); **AUTOSONIK** SUZUKA 3400, LE MANS 1200, BAHRAIN 1100; **KENVOX** AFRICA TWIN 1400, RAPTOR 1200, LOW RIDER 1100; **DIGITAL DYNAMIC** DYMAGE NF630 (**flashes 4**), DYMAGE M700 (**flashes 4**); **BLAUPUNKT** NEW YORK 800 RESISTIVE (max 6 button).

CX-ST-AL22

ALPINE

CX-ST-KE11

KENWOOD

CX-ST-PN21

PANASONIC; PHONOCAR FORYOU, CMU128, CM123, VM020, VM021, DM736, VM016, VM017, VM030, VM031, VM032, VM036, VM050, N6205, VM066;
AUTOSONIK DAYTONA 7000; **ZENEC** ZE-MC194, ZE-MC192, ZE-NC2040, XZENT XT8020, ZE-NC520, ZE-NC524; **DIGITAL DYNAMIC** DX650D, DX700;
HARDSTONE HS DPM61, HS DPM62, HS DPM63, HS DPM31, HS DPM7G, HS DPM8G, HS DPM71, HS DPM69, HS DPM64; **MACROM** M-DVD6555R, M-DVD6556R; **KENVOX** NINJA 7200, NINJA 7200 N; **RADIO JEEP; RADIO AUDI A4.**

CX-ST-BL12

BLAUPUNKT; BLAUPUNKT 2 ATLANTA 110, MADRID 210, TORONTO 410 BT, SAN FRANCISCO 310.

CX-ST-VD11

VDO*

CX-ST-EL11

ECLIPSE AVN2227P, AVN4429, AVN726EE.

*Special hardware required (via infrared), contact NavInc before the interface will be ordered.

For a full radio compatibility list and features, see the following link:

[LINK RADIO COMPATIBILITY LIST](#)

Optional cable adapters

To maintain the original parking sensors, the optional buzzer must be ordered:
CXC-ACC-PDC